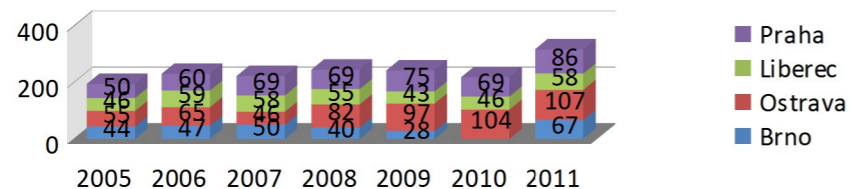


Srovnání počtu akutních pacientů na spinálních jednotkách v letech 2005-2011

	2005	2006	2007	2008	2009	2010	2011
C	45%	49%	40%	48%	49%	41%	44%
Th	43%	40%	48%	41%	41%	40%	39%
L	12%	11%	12%	11%	10%	19%	17%

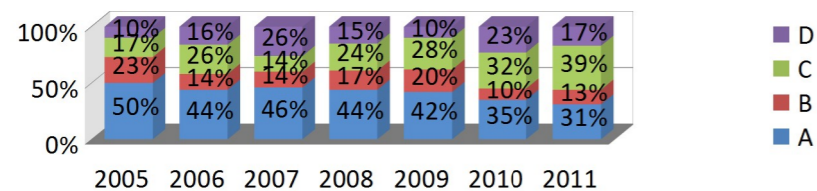
	2005	2006	2007	2008	2009	2010	2011
A	50%	44%	46%	44%	42%	35%	31%
B	23%	14%	14%	17%	20%	10%	13%
C	17%	26%	14%	24%	28%	32%	39%
D	10%	16%	26%	15%	10%	23%	17%

Počet míšních lézí



	2005	2006	2007	2008	2009	2010	2011
Brno	44	47	50	40	28	67	67
Ostrava	55	65	46	82	97	104	107
Liberec	46	59	58	55	43	46	58
Praha	50	60	69	69	75	69	86

ASIA Impairment Scale



Výška léze

